



## LOCAL DEVELOPMENT PLAN EXAMINATION BY NUMBERS



**6** weeks of hearings



**39** participants



**5,431** online views

**14** matters discussed



**140** post-submission documents published



**35** hearing sessions,  
totalling **102** hours,  
and **14** minutes



**207** inspector's questions answered

**6** Topic Papers

**43** Statements of Common Ground



## LOCAL DEVELOPMENT PLAN EXAMINATION TIMELINE



<b>Mar 2022</b>	Plan adopted
<b>Feb 2022</b>	Inspectors final report, examination concludes
<b>Sep 2021</b>	Modifications consultation
<b>Jul 2021</b>	Week six hearings
<b>Mar 2021</b>	Week five hearings
<b>Feb 2021</b>	Weeks two, three & four hearings
<b>Dec 2020</b>	Week one hearings
<b>Oct 2020</b>	Matters, Issues and Questions
<b>Jun 2020</b>	Inspectors initial questions
<b>Feb 2020</b>	Plan submitted



## LOCAL DEVELOPMENT PLAN: HOUSING PROVISION



**7,146**

new homes



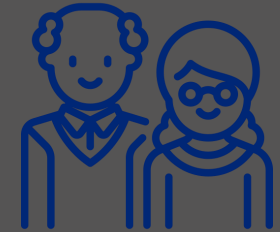
**1,641**

affordable homes  
on allocated sites



**4,690**

total homes to be  
built to meet  
requirement M4(2)  
accessible and  
adaptable  
dwellings, unless  
built to M4(3)  
wheelchair  
accessible  
dwellings, on  
allocated sites



**6**

care homes with  
capacity for **420**  
beds across four  
strategic  
allocations. Plus  
specialist  
accommodation on  
larger  
developments



**208**

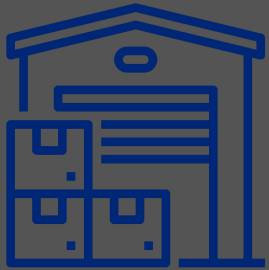
custom/self-build  
homes on  
allocated sites

**74**

affordable homes  
built to meet M4(3)  
wheelchair  
accessibility, on  
allocated sites



## LOCAL DEVELOPMENT PLAN: EMPLOYMENT PROVISION



**46.64**

hectares of new  
employment land



**1,604**

square metres  
(net) of  
comparison retail  
floorspace



**4,438**

square metres  
(net) of  
convenience  
floorspace



**5,000**

(minimum)  
additional jobs  
created through  
employment land  
allocations